



# Cadre Harmonisé (CH) Analysis of Areas at Risk and Identification of populations in Food and Nutrition Insecurity in Cameroon



**CAMEROON**

**Results of the analysis of Acute Food and Nutrition Insecurity in the current period**

**Valid: From 18/03/2023**

**To 31/05/2023**

**Created on : 18/03/2023**

## Key outcomes (finding) of areas in Food and Nutrition Insecurity



### Food consumption

At the national level, household food consumption has remained stable compared to the same period in 2022. Nearly 58% of households have an acceptable food consumption score. In the East region, only 4 out of 10 households have an acceptable level of food consumption. It is also the region with the lowest food consumption (about 3 out of 10 households). In terms of dietary diversity, 83% of households in Cameroon consumed at least five food groups in the seven days preceding the survey. The regions with the highest dietary diversity are West (91.4%), Littoral (89.7%), and Adamawa (89.6%). The lowest is the Far North region (61.6%). (Source: FSMS 2023)

### Livelihood Change



## The Results

For the current period (March to May 2023), 11% of the population in Cameroon is in Acute Food and Nutrition Insecurity situation (that is 3,012,103 people), of which approximately 1% is in emergency - phase 4 (335,899 people) and 10% in crisis – phase 3 (2,676,204 people). A total of 6,093,718 people are in stress (phase 2), that is about 22 per cent of the total population.

For the projected period (June to August 2023), 9% of population is expected to be in Acute Food and Nutrition Insecurity (about 2,357,305 people), with less than 1% in emergency-phase 4 (about 268,583 people) and 8% in crisis – phase 3 (about 2,088,718 people). In addition, 5,211,611 people will be under pressure or on stress-phase 2, representing approximately 19% of the total population.

## Bottom line

The 2022 farming season was strongly negatively affected by the soaring prices of farm inputs (especially fertilizers) as a result of the Russian war against Ukraine on the one hand, the floods that occurred in November 2022 in the Far North and North Regions on the other hand and also the sudden discontinuance of rainfall in the Southern part of the country.

Agricultural production dropped slightly compared to the previous year.

**The Far North Region** has a gross cereal balance sheet deficit of -15,249 tons, mainly due to the cereal deficit recorded in the following Divisions: Logone and Chari (-58044 tons), Mayo Tsanaga (-24684 tons), and Mayo-Danay (-23426 tons). These Divisions were affected by the November 2022 floods.

Mayo-Sava, which was slightly affected by the floods, has a positive cereal balance sheet of 1,436 tons. Despite the positive result, it remains exposed to Food and Nutrition Insecurity due to massive exports to Nigeria, and the Divisions with deficits in the southern part of the country.

In the South-West Region, cassava, plantain, cocoyam, maize and cocoa production increased by 76%, 37.3%, 29.4%, 75% and 13.5% respectively. On the other hand, the production of palm oil dropped by 46%.

With regards to livestock, the production of meat and offal in 2022 is estimated at 327.4 thousand tons, an increase of 8% compared to 2021.

In the Far North region, meat and offal production increased by 35% compared to 2021. On the other hand, there is a drop in the North-West (-2%), North (-6%) and South-West (-6%) regions compared to 2021. However, there was a 23% increase in imports of fishery and livestock products (EPIA) compared to 2021. Approximately, 268.6 thousand tons of EPIA products were imported.



## KEY DRIVERS AND LIMITING FACTORS

### KEY DRIVERS

#### Hazards and vulnerabilities

The main key drivers in the current period include persistent socio-political crisis in the North -West and South-West regions; insecurity at the borders with Nigeria and attacks in some villages by armed groups that led to deaths; looting of food stocks and livestock; burning of houses. Attacks on dry-season sorghum throughout the crop cycle by fall

army worms, floods, attacks by pachyderms in Mayo Danay, Mayo Kani, and Logone and Chari; soaring prices of farm inputs (especially fertilizers) and staple foods (oil, wheat flour, imported rice, meat and fish products) and high fuel prices have affected many households. The increasing number of internally displaced persons (IDPs) or returnees after floods and arm attacks or as a result of inter-tribal conflicts and soaring prices of food commodities have also negatively affected Food and Nutrition Security of vulnerable households.

## LIMITING FACTORS

### Availability

The 2022/2023 agro-pastoral season has been affected negatively as a result of soaring prices of farm inputs (especially fertilizers and pesticides), the effects of climate change, crop pests and diseases etc., in all 10 regions of the country. These shocks have led to a drop in agricultural (crop) production in the affected areas.

In the Far North Region, although some Divisions, such as Logone and Chari, Mayo Danay, and Mayo Tsanaga, experience low food availability, that has a significant impact on food consumption and livelihoods, food availability situation in the current period is acceptable. However, due to inadequate food practices, inadequate hygiene and sanitation and poor access to health care in all the Divisions in the region, food consumption of the population will be negatively affected.

In the projected period, depleting stocks in some households could negatively affect physical access, hence food consumption and livelihoods may slightly deteriorate. This situation may result to food crisis in some Divisions, namely Logone and Chari, Mayo Danay and Mayo Sava.

The production of meat and offal of all species increased in 2022 compared to 2021. Beef estimated at 126 thousand tons is the principal /main production (44%) followed by poultry, pig(pork), goat and sheep meat whose productions are 59.8 thousand tons (21%), 46 thousand tons (16%), 33.2 thousand tons (10%) and 25.1 thousand tons (9%) respectively. The production of table eggs in 2022 is 107.1 thousand tons. This production increased slightly by 2% compared to 2021. With 173.6 thousand tons of milk in 2022, milk production increased by 5% compared to the previous year (2021).

Fish production in 2022 stood at 233.1 MT, a 4% increase compared to 2021.

### Access

The increase in food and non-food prices since the beginning of the Russia war against Ukraine, is continuing and is likely to trigger price hikes in the Far North and North regions in the coming months. Despite last year's harvests and off-season crops, the price of sorghum has not dropped.

This will affect negatively, the rebuilding of national stocks and food availability of vulnerable households.

Foodstuffs such as rice and wheat increased by 10% and 15% respectively, while refined vegetable oil and locally produced palm oil also increased by 15%.

The price of livestock and fish products have increased in major consumer centres' such as Yaoundé and Douala.

In the projected period, access to food may be medium(average) to limited, especially in the northern part of the country. Households' purchasing power may vary from one Division to the other, depending on the income levels. Cereal prices will vary depending on whether is the lean period or not, depending also on the agro-ecological zone, despite the relative availability of food stocks compared to the five-year average. Some markets may not be accessible during the projected period due to floods, persistent insecurity in the North-West and South-West regions, and inaccessible road networks (infrastructures) especially in the southern part of the country.

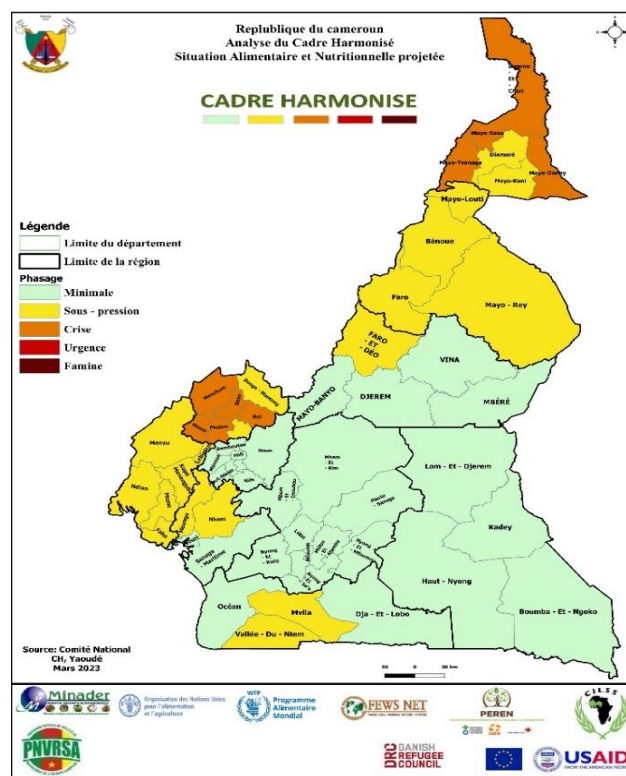
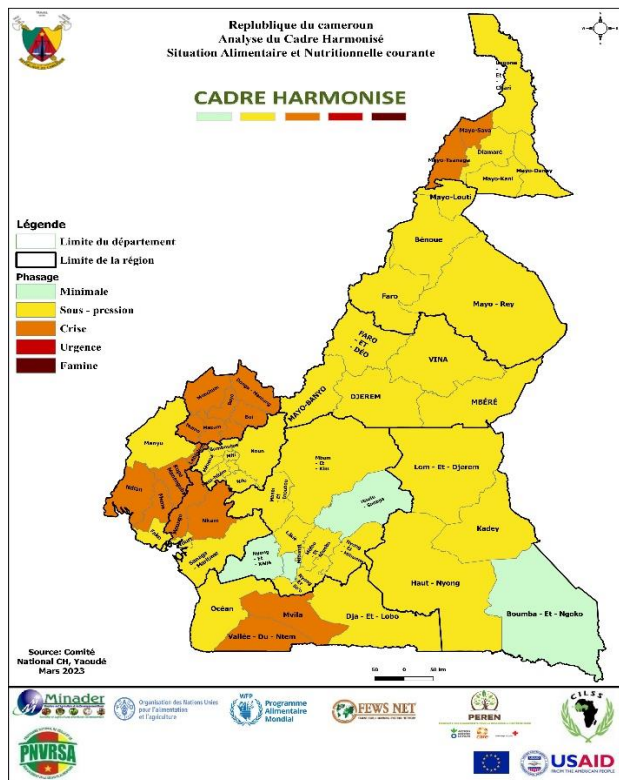


## MAIN RESULTS AND CHALLENGES

Between March and May 2023, the Food and Nutrition Security situation is good in 4 Divisions (minimal -phase 1) and relatively acceptable in 37 Divisions (stress- phase 2). On the other hand, the situation has deteriorated in 17 Divisions that are in crisis (phase 3), including seven in the North-West (Boyo, Bui, Donga Mantung, Menchum, Mezam, Momo, Ngo- Ketunjia), 04 in the South-West (Kupe Manenguba, Lebialem, Meme, Ndian), 02 in Littoral (Mungo, Nkam), 02 in the Far-North (Mayo Sava, Mayo Tsanaga) and 02 in the South region (Mvila, Vallée de Ntem). No Division is in emergency (phase 4) or famine (phase 5).

## PROSPECTS

From June to August 2023, the Food and Nutrition Security situation is expected to remain satisfactory in 39 Divisions (minimal - phase 1). However, 19 Divisions could likely remain under pressure or stress (phase2) with a relatively acceptable Food and Nutrition Security situation. It is the harvesting period in all the regions of the southern zone and hence, probable food availability for the households. This is the lean period in the Northern regions of Cameroon. With this notwithstanding, 09 Divisions in the North-West and Far North regions shall likely be in crisis (phase 3). No Division shall be in emergency or famine phase between June and August 2023.



Reliability level : \*\*\*



## METHODOLOGY AND DIFFICULTIES ENCOUNTERED DURING THE ANALYSIS

The Cadre Harmonisé (CH) Analysis session in Cameroon took place from March 13 to 18, 2023. It covered 58 Divisions and all regions of the country. 75 participants attended the March session among whom were 11 women. 20 participants came from decentralized services and 14 from central services of different Ministries and state institutions (MINADER, MINEPIA, MINEPAT/INS, MINEE, MINCOMMERCE, ONACC, Office Céréalière, CG/FAO PAM); 12 analysts from the UNS (FAO, UNFPA and WFP) and 09 from Non-Governmental Organizations: ACF, FEWSNET, NRC, DRC INTERSOS, RELUFA. 08 participants were at their first experience in CH analysis.

The results of the analyses were obtained after group and plenary sessions. The analyses were conducted / carried out at the Divisional level. The data used, came from the results of the FSMS conducted in all regions of Cameroon. The data on contributing factors came from the reports of Divisional and Sub-Divisional Delegates, the Regional Service of Statistics of MINADER and MINEPIA, sectoral Ministries (MINEE, MINADT, MINCOMMERCE, etc.), partners and members of GTSA (Food Security Work Group).

After six days of analysis, a technical group (National Analysis Task Force- NATF) composed of MINADER, FAO, WFP, ACF and FEWSNET reviewed the results of the analysis on March 21, 2023 in Yaoundé.



## SEASONAL CALENDAR AND MONITORING INDICATORS

## Farming calendar

| Région         | Janvier            | Fevrier   | Mars                                   | Avril                                   | Mai       | Juin   | Juillet                                   | Aout | Septembre                             | Octobre             | Novembre                          | Decembre |
|----------------|--------------------|-----------|--|---|-----------|--|---|------|---------------------------------------|---------------------|-----------------------------------|----------|
| Ouest          |                    |           | Piquetage (Palmier, cafeier, cacaoyer) | Semi (maïs, arachide, haricot, legumes) | Entretien |  | Recolte (maïs, arachide, haricot, legume) |      |                                       |                     | Tubercules, cereales, café, cacao |          |
| Sud-Ouest      |                    | Poivrier  | Piquetage (Palmier, cafeier, cacaoyer) | Semi (maïs, arachide, haricot, legumes) | Entretien | Entretien/r ecolte du poivron                  | Recolte (maïs, arachide, haricot, legume) |      |                                       |                     | Tubercules, cereales, café, cacao |          |
| Centre         |                    | Tabac     | Piquetage (Palmier, cafeier, cacaoyer) | Semi (maïs, arachide, haricot, legumes) | Entretien | Entretien/r ecolte dt tabac                    | Recolte (maïs, arachide, haricot, legume) |      |                                       |                     | Tubercules, cereales, café, cacao |          |
| Sud            |                    |           | Piquetage (Palmier, cafeier, cacaoyer) | Semi (maïs, arachide, haricot, legumes) | Entretien |  | Recolte (maïs, arachide, haricot, legume) |      |                                       |                     | Tubercules,                       |          |
| Est            |                    | Tabac     | Piquetage (Palmier, cafeier, cacaoyer) | Semi (maïs, arachide, haricot, legumes) | Entretien | Entretien/r ecolte dt tabac                    | Recolte (maïs, arachide, haricot, legume) |      |                                       |                     | Tubercules, cereales, café, cacao |          |
| Littoral       |                    | Poivrier  | Piquetage (Palmier, cafeier, cacaoyer) | Semi (maïs, arachide, haricot, legumes) | Entretien | Entretien/r ecolte du poivron                  | Recolte (maïs, arachide, haricot, legume) |      |                                       |                     | Tubercules, cereales, café, cacao |          |
| Nord-Ouest     |                    | Theier    | Piquetage (Palmier, cafeier, cacaoyer) | Semi (maïs, arachide, haricot, legumes) | Entretien |  | Recolte (maïs, arachide, haricot, legume) |      |                                       |                     | Tubercules, cereales, café, cacao |          |
| <b>Pluies</b>  |                    |           |  |   |           | <b>Fortes pluies</b>                           |   |      |                                       |                     |                                   |          |
| Extrême-Nord   | Sorgho ss          | Sorgho ss |  |   |           | Semi (manio) semi (coton, cereales, oignon)    |   |      | Cereales, arachide, legume            | tubercules, coton   |                                   |          |
| Nord           |                    |           |  |   |           | Semi (manio) semi (coton, cereales, oignon)    |   |      | Cereales, arachide, legume            | tubercules, coton   |                                   |          |
| Adamaoua       |                    |           |  |   |           | Semi (manio) Semi (Cereales, haricot, legumes) |   |      | cereales, arachides, legumes, roselle | tubercules, roselle |                                   |          |
| <b>Pluies</b>  |                    |           |  |   |           |  | <b>Fortes pluies</b>                      |      |                                       |                     |                                   |          |
| <b>Legende</b> | preparation du sol |           | semi                                   |   |           |  | Entretien des cultures/plantations        |      |                                       | Recoltes            |                                   |          |

### Timetable for data collection of key indicators and factors

The schedule for monitoring indicators begins with the farming season from February in collaboration with the focal points of PNVRSA and the decentralized structures in charge of Agriculture and Livestock at the Divisional level.

| Activities(operations)  | Jan | Fév. | Mars | Avril | Mai | Juin | Juil | Aout | Sept | Oct | Nov | Déc |
|---|-----|------|------|-------|-----|------|------|------|------|-----|-----|-----|
| ENSAN survey  |     |      |      |       |     |      |      |      |      |     |     |     |
| Secondary data collection (Prè-CH) in the Regions for October session + ENSAN results |     |      |      |       |     |      |      |      |      |     |     |     |



## RECOMMANDATIONS

The Government and partners are invited to take appropriate measures to enhance and strengthen technical and financial support of vulnerable populations. Priority should be given to the populations in phase 3 and above, that is 3,012,103 and 2,357,305 persons in the current and projected periods respectively. The objective is to anticipate the deterioration of the food and nutritional situation from March to May 2023 and/or June to August 2023. The latter corresponds to the lean season in the Northern regions. The priority actions include:

- Update the National Response Plan (NRP) for response to food crisis;
- Trigger humanitarian assistance for populations in crisis or worse (3,012,103 people) in the 10 regions of Cameroon in the current period and 2,357,305 people in the projected period. The Government has to mobilize its own resources to complement support from potential multilateral and bilateral funding partners to improve living conditions, protect livelihoods, prevent asset loss, and reduce malnutrition levels.
- Implement interventions to improve the resilience of populations under pressure or stress by supporting crop and livestock production and strengthening population's livelihoods, input support, finance production in rural and peri-urban areas, small-scale hydro-agricultural development and transhumance corridors, provide fishing nets, and put in place, measures to confine pachyderms in their habitats.
- Seek funding for emergency projects in response to food crisis etc.

### To the Government :

- Ensure that the Inter-Ministerial Committee on Food Security (ICFS), at the Prime Ministry is functioning;
- Set up/create and make operational, Food Crisis Prevention and Management in Cameroon;
- Provide Financial Support during Food and Nutrition Security data collection / surveys (MINADER, MINEPIA, MINCOMMERCE, MINEE, MINEPAT etc.);
- Strengthen the Cereal Office by creating emergency stocks or by regulating cereal prices;
- Reinvigorate (revitalize) the early warning component of the cereal office through the production of Early Warning Bulletins quarterly;

The Ministry of Public Health should conduct every year, SMART surveys in all 10 regions, that is 58 Divisions of the country to facilitate the inclusion of nutrition and mortality data during CH analyses.

**To the partners:**

Provide technical and financial support for trainings and data collection operations or surveys on Food and Nutrition Security (food security assessment, market data collection, etc.);

Support capacity building of National Executives on elaboration of cereal and food balance sheets and the presentation of administrative data collection reports;

Provide logistics and technical support to the National Early Warning System;

Provide PNVRSA with survey data carried out by their respective structures.

**To the technical services of MINADER/PNVRSA :**

Allow/permit the analysis unit to set up a framework for collecting data on CH indicators at Sub-Divisional level.

Conduct an assessment of the impact of the Russia war against Ukraine on Food and Nutrition Security, a year later.

Take appropriate and relevant measures to organize the process of collecting and compiling evidence at the regional level in order to facilitate the production and availability of evidence inventory sheets by the Analysis Unit, no later than two weeks before the start of the analysis sessions;

Implement activities to support communities in nutritional education and the production of crops with high nutritional values.

Emphasize the functioning of the GTSA.

Things(What) to watch out for by August 2023:

- Monitor the socio-political crisis and returnees in the Northwest, Southwest, West, Littoral, Adamawa and Centre regions;
- Monitor the evolution/ variation of prices of farm inputs;
- Monitor how the markets are functioning;
- Monitor the incorporation of local flours during the baking of bread.

**CURRENT PERIOD BY DIVISION**

| 1st administrative level | 2nd administrative level | 3rd administrative level | Total population | Zone classification | CURRENT PERIOD           |                          |                          |                          |                          |                                  |
|--------------------------|--------------------------|--------------------------|------------------|---------------------|--------------------------|--------------------------|--------------------------|--------------------------|--------------------------|----------------------------------|
|                          |                          |                          |                  |                     | Total population in Ph 1 | Total population in Ph 2 | Total population in Ph 3 | Total population in Ph 4 | Total population in Ph 5 | Total population in Phase 3 to 5 |
| Cameroun                 | Adamaoua                 | Djérem                   | 203,010          | 2                   | 152,258                  | 40,602                   | 10,151                   | -                        | -                        | 10,151                           |
| Cameroun                 | Adamaoua                 | Faro-et-Déou             | 134,395          | 2                   | 86,013                   | 40,319                   | 8,064                    | -                        | -                        | 8,064                            |
| Cameroun                 | Adamaoua                 | Mayo-Banyo               | 303,937          | 2                   | 197,559                  | 69,906                   | 33,433                   | 3,039                    | -                        | 36,472                           |
| Cameroun                 | Adamaoua                 | Mbéré                    | 278,922          | 2                   | 184,089                  | 66,941                   | 27,892                   | -                        | -                        | 27,892                           |
| Cameroun                 | Adamaoua                 | Vina                     | 516,490          | 2                   | 382,203                  | 108,463                  | 25,825                   | -                        | -                        | 25,825                           |
| Cameroun                 | Centre                   | Haute-Sanaga             | 154,661          | 1                   | 131,462                  | 17,013                   | 6,186                    | -                        | -                        | 6,186                            |
| Cameroun                 | Centre                   | Lekié                    | 440,855          | 2                   | 348,275                  | 79,354                   | 13,226                   | -                        | -                        | 13,226                           |
| Cameroun                 | Centre                   | Mbam-et-Inoubou          | 291,171          | 2                   | 197,996                  | 72,793                   | 20,382                   | -                        | -                        | 20,382                           |
| Cameroun                 | Centre                   | Mbam-et-Kim              | 162,612          | 2                   | 125,211                  | 32,522                   | 4,878                    | -                        | -                        | 4,878                            |
| Cameroun                 | Centre                   | Mefou-et-Afamba          | 194,227          | 2                   | 151,497                  | 34,961                   | 7,769                    | -                        | -                        | 7,769                            |
| Cameroun                 | Centre                   | Mefou-et-Akono           | 90,956           | 1                   | 76,403                   | 9,096                    | 5,457                    | -                        | -                        | 5,457                            |

|          |              |                  |           |   |           |         |         |        |   |         |
|----------|--------------|------------------|-----------|---|-----------|---------|---------|--------|---|---------|
| Cameroun | Centre       | Mfoundi          | 2,832,335 | 2 | 2,124,251 | 623,114 | 84,970  | -      | - | 84,970  |
| Cameroun | Centre       | Nyong-et-Kellé   | 200,075   | 1 | 170,064   | 28,011  | 2,001   | -      | - | 2,001   |
| Cameroun | Centre       | Nyong-et-Mfoumou | 161,064   | 2 | 127,241   | 27,381  | 6,443   | -      | - | 6,443   |
| Cameroun | Centre       | Nyong-et-So'o    | 178,715   | 2 | 134,036   | 35,743  | 8,936   | -      | - | 8,936   |
| Cameroun | Est          | Boumba-et-Ngoko  | 177,781   | 1 | 149,336   | 17,778  | 10,667  | -      | - | 10,667  |
| Cameroun | Est          | Haut-Nyong       | 302,871   | 2 | 221,096   | 54,517  | 27,258  | -      | - | 27,258  |
| Cameroun | Est          | Kadey            | 283,728   | 2 | 195,772   | 65,257  | 22,698  | -      | - | 22,698  |
| Cameroun | Est          | Lom-et-Djérem    | 425,033   | 2 | 280,522   | 89,257  | 51,004  | 4,250  | - | 55,254  |
| Cameroun | Extrême-Nord | Diamaré          | 970,109   | 2 | 717,881   | 174,620 | 77,609  | -      | - | 77,609  |
| Cameroun | Extrême-Nord | Logone-et-Chari  | 735,628   | 2 | 478,158   | 147,126 | 88,275  | 22,069 | - | 110,344 |
| Cameroun | Extrême-Nord | Mayo-Danay       | 799,167   | 2 | 503,475   | 183,808 | 111,883 | -      | - | 111,883 |
| Cameroun | Extrême-Nord | Mayo-Kani        | 611,234   | 2 | 458,426   | 116,134 | 36,674  | -      | - | 36,674  |
| Cameroun | Extrême-Nord | Mayo-Sava        | 527,012   | 3 | 258,236   | 147,563 | 100,132 | 21,080 | - | 121,213 |
| Cameroun | Extrême-Nord | Mayo-Tsanaga     | 1,057,334 | 3 | 465,227   | 348,920 | 200,893 | 42,293 | - | 243,187 |
| Cameroun | Littoral     | Moungo           | 584,479   | 3 | 315,619   | 151,965 | 111,051 | 5,845  | - | 116,896 |
| Cameroun | Littoral     | Nkam             | 56,608    | 3 | 26,606    | 16,982  | 10,189  | 2,830  | - | 13,020  |
| Cameroun | Littoral     | Sanaga-Maritime  | 250,157   | 2 | 192,621   | 47,530  | 10,006  | -      | - | 10,006  |
| Cameroun | Littoral     | Wouri            | 2,977,526 | 2 | 2,292,695 | 535,955 | 148,876 | -      | - | 148,876 |
| Cameroun | Nord-Ouest   | Boyo             | 192,473   | 3 | 98,161    | 50,043  | 34,645  | 9,624  | - | 44,269  |
| Cameroun | Nord-Ouest   | Bui              | 496,212   | 3 | 168,712   | 173,674 | 119,091 | 34,735 | - | 153,826 |
| Cameroun | Nord-Ouest   | Donga-Mantung    | 416,012   | 3 | 153,924   | 145,604 | 91,523  | 24,961 | - | 116,483 |
| Cameroun | Nord-Ouest   | Menchum          | 249,668   | 3 | 92,377    | 74,900  | 64,914  | 17,477 | - | 82,390  |
| Cameroun | Nord-Ouest   | Mezam            | 807,775   | 3 | 355,421   | 242,333 | 177,711 | 32,311 | - | 210,022 |
| Cameroun | Nord-Ouest   | Momo             | 213,751   | 3 | 87,638    | 59,850  | 51,300  | 14,963 | - | 66,263  |
| Cameroun | Nord-Ouest   | Ngo-Ketunjia     | 288,737   | 3 | 118,382   | 101,058 | 57,747  | 11,549 | - | 69,297  |
| Cameroun | Nord         | Bénoué           | 1,463,133 | 2 | 1,126,612 | 263,364 | 73,157  | -      | - | 73,157  |
| Cameroun | Nord         | Faro             | 119,319   | 2 | 84,716    | 21,477  | 13,125  | -      | - | 13,125  |
| Cameroun | Nord         | Mayo-Louti       | 672,057   | 2 | 530,925   | 94,088  | 47,044  | -      | - | 47,044  |
| Cameroun | Nord         | Mayo-Rey         | 644,364   | 2 | 483,273   | 141,760 | 19,331  | -      | - | 19,331  |
| Cameroun | Ouest        | Bamboutos        | 450,657   | 2 | 351,512   | 76,612  | 22,533  | -      | - | 22,533  |
| Cameroun | Ouest        | Haut-Nkam        | 223,141   | 2 | 158,430   | 42,397  | 22,314  | -      | - | 22,314  |
| Cameroun | Ouest        | Hauts-Plateaux   | 124,339   | 2 | 99,471    | 22,381  | 2,487   | -      | - | 2,487   |
| Cameroun | Ouest        | Koung-Khi        | 100,209   | 2 | 75,157    | 19,040  | 6,013   | -      | - | 6,013   |
| Cameroun | Ouest        | Menoua           | 440,414   | 2 | 312,694   | 96,891  | 30,829  | -      | - | 30,829  |
| Cameroun | Ouest        | Mifi             | 464,598   | 2 | 269,467   | 134,733 | 51,106  | 9,292  | - | 60,398  |
| Cameroun | Ouest        | Ndé              | 146,179   | 2 | 89,169    | 43,854  | 13,156  | -      | - | 13,156  |
| Cameroun | Ouest        | Noun             | 701,365   | 2 | 533,037   | 126,246 | 42,082  | -      | - | 42,082  |
| Cameroun | Sud-Ouest    | Fako             | 718,825   | 2 | 452,860   | 165,330 | 79,071  | 21,565 | - | 100,636 |
| Cameroun | Sud-Ouest    | Kupe-Manenguba   | 162,716   | 3 | 61,832    | 55,323  | 39,052  | 6,509  | - | 45,560  |
| Cameroun | Sud-Ouest    | Lebialem         | 175,288   | 3 | 91,150    | 45,575  | 29,799  | 8,764  | - | 38,563  |
| Cameroun | Sud-Ouest    | Manyu            | 279,014   | 2 | 181,359   | 61,383  | 33,482  | 2,790  | - | 36,272  |
| Cameroun | Sud-Ouest    | Meme             | 503,556   | 3 | 196,387   | 166,173 | 125,889 | 15,107 | - | 140,996 |
| Cameroun | Sud-Ouest    | Ndian            | 188,916   | 3 | 73,677    | 56,675  | 45,340  | 13,224 | - | 58,564  |
| Cameroun | Sud          | Dja-et-Lobo      | 303,537   | 2 | 233,723   | 63,743  | 6,071   | -      | - | 6,071   |
| Cameroun | Sud          | Mvila            | 276,533   | 3 | 138,267   | 77,429  | 60,837  | -      | - | 60,837  |

|              |     |                |         |   |                   |                  |                  |                |          |                  |
|--------------|-----|----------------|---------|---|-------------------|------------------|------------------|----------------|----------|------------------|
| Cameroun     | Sud | Océan          | 276,015 | 2 | 195,971           | 55,203           | 19,321           | 5,520          | -        | 24,841           |
| Cameroun     | Sud | Vallée-du-Ntem | 122,034 | 3 | 58,576            | 32,949           | 24,407           | 6,102          | -        | 30,509           |
| <b>TOTAL</b> |     |                |         |   | <b>18,017,109</b> | <b>6,093,718</b> | <b>2,676,204</b> | <b>335,899</b> | <b>-</b> | <b>3,012,103</b> |

## PROJECTED PERIOD BY DIVISION

| 1st administrative level | 2nd administrative level | 3rd administrative level | Total population | PROJECTED PERIOD    |                          |                          |                          |                          |                          |                                  |
|--------------------------|--------------------------|--------------------------|------------------|---------------------|--------------------------|--------------------------|--------------------------|--------------------------|--------------------------|----------------------------------|
|                          |                          |                          |                  | Zone classification | Total population in Ph 1 | Total population in Ph 2 | Total population in Ph 3 | Total population in Ph 4 | Total population in Ph 5 | Total population in Phase 3 to 5 |
| Cameroun                 | Adamaoua                 | Djérem                   | 203,010          | 1                   | 168,498                  | 30,452                   | 4,060                    | -                        | -                        | 4,060                            |
| Cameroun                 | Adamaoua                 | Faro-et-Déou             | 134,395          | 2                   | 76,605                   | 47,038                   | 10,752                   | -                        | -                        | 10,752                           |
| Cameroun                 | Adamaoua                 | Mayo-Banyo               | 303,937          | 1                   | 249,228                  | 42,551                   | 12,157                   | -                        | -                        | 12,157                           |
| Cameroun                 | Adamaoua                 | Mbéré                    | 278,922          | 1                   | 239,873                  | 33,471                   | 5,578                    | -                        | -                        | 5,578                            |
| Cameroun                 | Adamaoua                 | Vina                     | 516,490          | 1                   | 439,017                  | 61,979                   | 15,495                   | -                        | -                        | 15,495                           |
| Cameroun                 | Centre                   | Haute-Sanaga             | 154,661          | 1                   | 140,742                  | 12,373                   | 1,547                    | -                        | -                        | 1,547                            |
| Cameroun                 | Centre                   | Lekié                    | 440,855          | 1                   | 392,361                  | 44,086                   | 4,409                    | -                        | -                        | 4,409                            |
| Cameroun                 | Centre                   | Mbam-et-Inoubou          | 291,171          | 1                   | 244,584                  | 40,764                   | 5,823                    | -                        | -                        | 5,823                            |
| Cameroun                 | Centre                   | Mbam-et-Kim              | 162,612          | 1                   | 147,977                  | 14,635                   | -                        | -                        | -                        | -                                |
| Cameroun                 | Centre                   | Mefou-et-Afamba          | 194,227          | 1                   | 161,208                  | 29,134                   | 3,885                    | -                        | -                        | 3,885                            |
| Cameroun                 | Centre                   | Mefou-et-Akono           | 90,956           | 1                   | 81,860                   | 7,276                    | 1,819                    | -                        | -                        | 1,819                            |
| Cameroun                 | Centre                   | Mfoundi                  | 2,832,335        | 1                   | 2,435,808                | 368,204                  | 28,323                   | -                        | -                        | 28,323                           |

|          |              |                  |           |   |           |         |         |        |   |         |
|----------|--------------|------------------|-----------|---|-----------|---------|---------|--------|---|---------|
| Cameroun | Centre       | Nyong-et-Kellé   | 200,075   | 1 | 182,068   | 16,006  | 2,001   | -      | - | 2,001   |
| Cameroun | Centre       | Nyong-et-Mfoumou | 161,064   | 1 | 141,736   | 16,106  | 3,221   | -      | - | 3,221   |
| Cameroun | Centre       | Nyong-et-So'o    | 178,715   | 1 | 151,908   | 21,446  | 5,361   | -      | - | 5,361   |
| Cameroun | Est          | Boumba-et-Ngoko  | 177,781   | 1 | 154,669   | 17,778  | 5,333   | -      | - | 5,333   |
| Cameroun | Est          | Haut-Nyong       | 302,871   | 1 | 260,469   | 30,287  | 12,115  | -      | - | 12,115  |
| Cameroun | Est          | Kadey            | 283,728   | 1 | 238,332   | 31,210  | 14,186  | -      | - | 14,186  |
| Cameroun | Est          | Lom-et-Djérem    | 425,033   | 1 | 348,527   | 55,254  | 21,252  | -      | - | 21,252  |
| Cameroun | Extrême-Nord | Diamaré          | 970,109   | 2 | 659,674   | 213,424 | 97,011  | -      | - | 97,011  |
| Cameroun | Extrême-Nord | Logone-et-Chari  | 735,628   | 3 | 353,101   | 220,688 | 132,413 | 29,425 | - | 161,838 |
| Cameroun | Extrême-Nord | Mayo-Danay       | 799,167   | 3 | 351,633   | 255,733 | 143,850 | 47,950 | - | 191,800 |
| Cameroun | Extrême-Nord | Mayo-Kani        | 611,234   | 2 | 421,751   | 146,696 | 42,786  | -      | - | 42,786  |
| Cameroun | Extrême-Nord | Mayo-Sava        | 527,012   | 3 | 194,994   | 184,454 | 115,943 | 31,621 | - | 147,563 |
| Cameroun | Extrême-Nord | Mayo-Tsanaga     | 1,057,334 | 3 | 391,214   | 370,067 | 222,040 | 74,013 | - | 296,054 |
| Cameroun | Littoral     | Moungo           | 584,479   | 2 | 409,135   | 122,741 | 52,603  | -      | - | 52,603  |
| Cameroun | Littoral     | Nkam             | 56,608    | 2 | 39,060    | 14,152  | 3,396   | -      | - | 3,396   |
| Cameroun | Littoral     | Sanaga-Maritime  | 250,157   | 1 | 202,627   | 40,025  | 7,505   | -      | - | 7,505   |
| Cameroun | Littoral     | Wouri            | 2,977,526 | 1 | 2,441,571 | 446,629 | 89,326  | -      | - | 89,326  |
| Cameroun | Nord-Ouest   | Boyo             | 192,473   | 3 | 111,634   | 42,344  | 30,796  | 7,699  | - | 38,495  |
| Cameroun | Nord-Ouest   | Bui              | 496,212   | 3 | 228,258   | 148,864 | 94,280  | 24,811 | - | 119,091 |
| Cameroun | Nord-Ouest   | Donga-Mantung    | 416,012   | 2 | 232,967   | 128,964 | 49,921  | 4,160  | - | 54,082  |
| Cameroun | Nord-Ouest   | Menchum          | 249,668   | 3 | 129,827   | 67,410  | 44,940  | 7,490  | - | 52,430  |
| Cameroun | Nord-Ouest   | Mezam            | 807,775   | 3 | 444,276   | 193,866 | 153,477 | 16,156 | - | 169,633 |
| Cameroun | Nord-Ouest   | Momo             | 213,751   | 3 | 111,151   | 53,438  | 42,750  | 6,413  | - | 49,163  |
| Cameroun | Nord-Ouest   | Ngo-Ketunjia     | 288,737   | 2 | 153,031   | 92,396  | 43,311  | -      | - | 43,311  |
| Cameroun | Nord         | Bénoué           | 1,463,133 | 2 | 1,053,456 | 292,627 | 117,051 | -      | - | 117,051 |
| Cameroun | Nord         | Faro             | 119,319   | 2 | 83,523    | 23,864  | 11,932  | -      | - | 11,932  |
| Cameroun | Nord         | Mayo-Louti       | 672,057   | 2 | 510,763   | 100,809 | 60,485  | -      | - | 60,485  |
| Cameroun | Nord         | Mayo-Rey         | 644,364   | 2 | 438,168   | 173,978 | 32,218  | -      | - | 32,218  |
| Cameroun | Ouest        | Bamboutos        | 450,657   | 1 | 405,591   | 45,066  | -       | -      | - | -       |
| Cameroun | Ouest        | Haut-Nkam        | 223,141   | 1 | 180,744   | 33,471  | 8,926   | -      | - | 8,926   |
| Cameroun | Ouest        | Hauts-Plateaux   | 124,339   | 1 | 108,175   | 14,921  | 1,243   | -      | - | 1,243   |
| Cameroun | Ouest        | Koung-Khi        | 100,209   | 1 | 91,190    | 8,017   | 1,002   | -      | - | 1,002   |
| Cameroun | Ouest        | Menoua           | 440,414   | 1 | 365,544   | 66,062  | 8,808   | -      | - | 8,808   |
| Cameroun | Ouest        | Mifi             | 464,598   | 1 | 376,324   | 69,690  | 18,584  | -      | - | 18,584  |
| Cameroun | Ouest        | Ndé              | 146,179   | 1 | 124,252   | 17,541  | 4,385   | -      | - | 4,385   |
| Cameroun | Ouest        | Noun             | 701,365   | 1 | 603,174   | 84,164  | 14,027  | -      | - | 14,027  |
| Cameroun | Sud-Ouest    | Fako             | 718,825   | 2 | 503,178   | 143,765 | 64,694  | 7,188  | - | 71,883  |
| Cameroun | Sud-Ouest    | Kupe-Manenguba   | 162,716   | 2 | 94,375    | 39,052  | 27,662  | 1,627  | - | 29,289  |
| Cameroun | Sud-Ouest    | Lebialem         | 175,288   | 2 | 113,937   | 43,822  | 17,529  | -      | - | 17,529  |
| Cameroun | Sud-Ouest    | Manyu            | 279,014   | 2 | 198,100   | 53,013  | 27,901  | -      | - | 27,901  |
| Cameroun | Sud-Ouest    | Meme             | 503,556   | 2 | 307,169   | 125,889 | 65,462  | 5,036  | - | 70,498  |
| Cameroun | Sud-Ouest    | Ndian            | 188,916   | 2 | 111,460   | 47,229  | 26,448  | 3,778  | - | 30,227  |
| Cameroun | Sud          | Dja-et-Lobo      | 303,537   | 1 | 261,042   | 39,460  | 3,035   | -      | - | 3,035   |
| Cameroun | Sud          | Mvila            | 276,533   | 2 | 185,277   | 63,603  | 27,653  | -      | - | 27,653  |

|              |     |                |                   |   |                   |                  |                  |                |   |                  |
|--------------|-----|----------------|-------------------|---|-------------------|------------------|------------------|----------------|---|------------------|
| Cameroun     | Sud | Océan          | 276,015           | 1 | 229,092           | 33,122           | 13,801           | -              | - | 13,801           |
| Cameroun     | Sud | Vallée-du-Ntem | 122,034           | 2 | 78,102            | 30,509           | 12,203           | 1,220          | - | 13,424           |
| <b>TOTAL</b> |     |                | <b>27,122,929</b> |   | <b>19,554,013</b> | <b>5,211,611</b> | <b>2,088,718</b> | <b>268,587</b> | - | <b>2,357,305</b> |

## CONTACTS

**Maina Hamadou:** National Coordinator of National Programme for Monitoring and Strengthening Food Security/ NPSSFS/MINADER. [Maina\\_hamadou@yahoo.com](mailto:Maina_hamadou@yahoo.com) Tel : +237 674 40 60 46 / 222 22 41 05

**PAYANG Jeremie:** National Coordinator Food Security Working Group (GTSA) WFP. [Jeremie.payang@wfp.org](mailto:Jeremie.payang@wfp.org) Tel : +237 699 548 047

## LIST OF STRUCTURES THAT PARTICIPATED IN THE ANALYSIS



MINADER, MINEPIA, MINEE, MINAT, MINSANTE, MINCOMMERCE, INS, FAO, PAM, FEWSNET, DRC, ACF, RELUFA, INTERSOS,